



Morning Schedule

8:00 am– School Doors open. Cars/buses un-load.

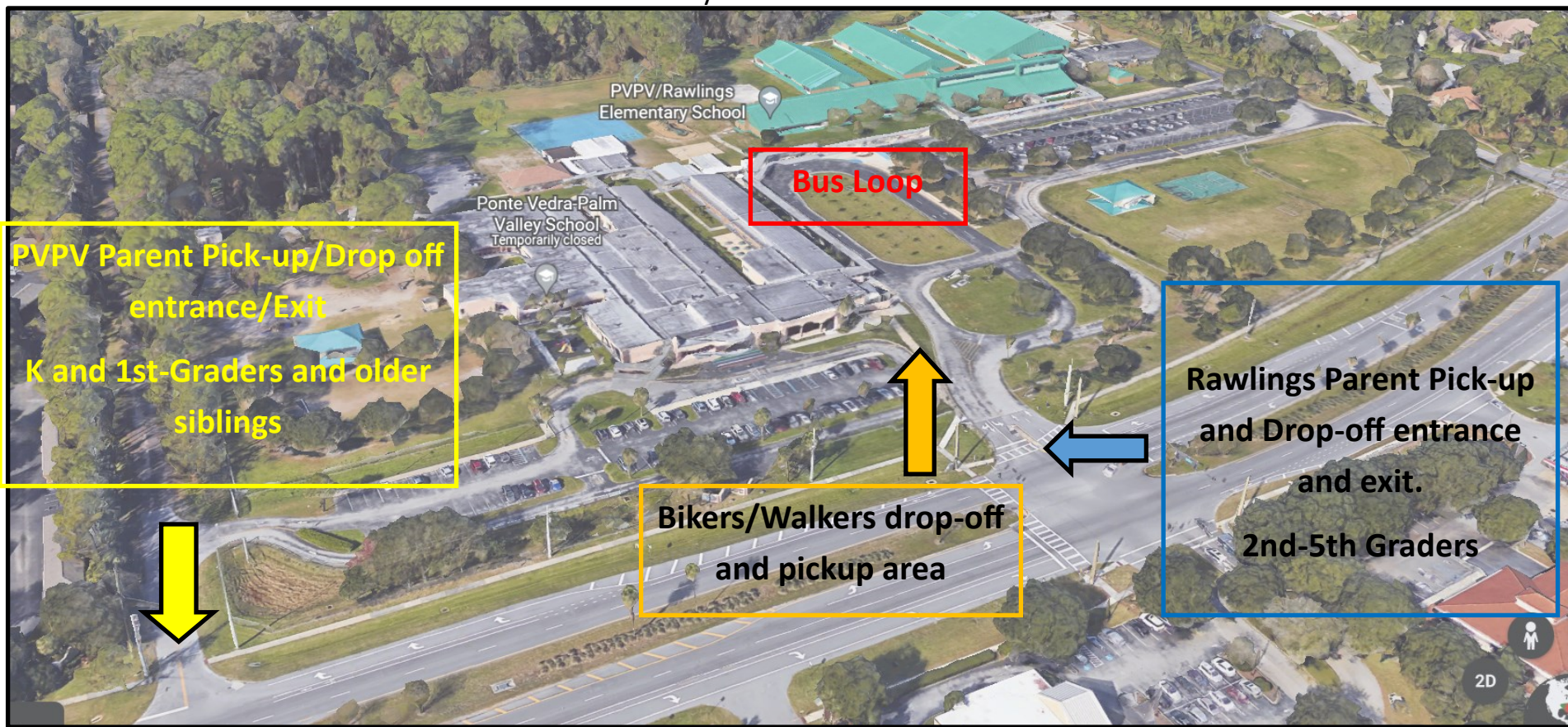
8:15– 1st Bell

8:25– Tardy Bell

Afternoon Schedule

2:45 pm– School dismissal on Monday, Tuesday, Thursday, and Friday

1:45– Wednesday Dismissal





AM Procedures

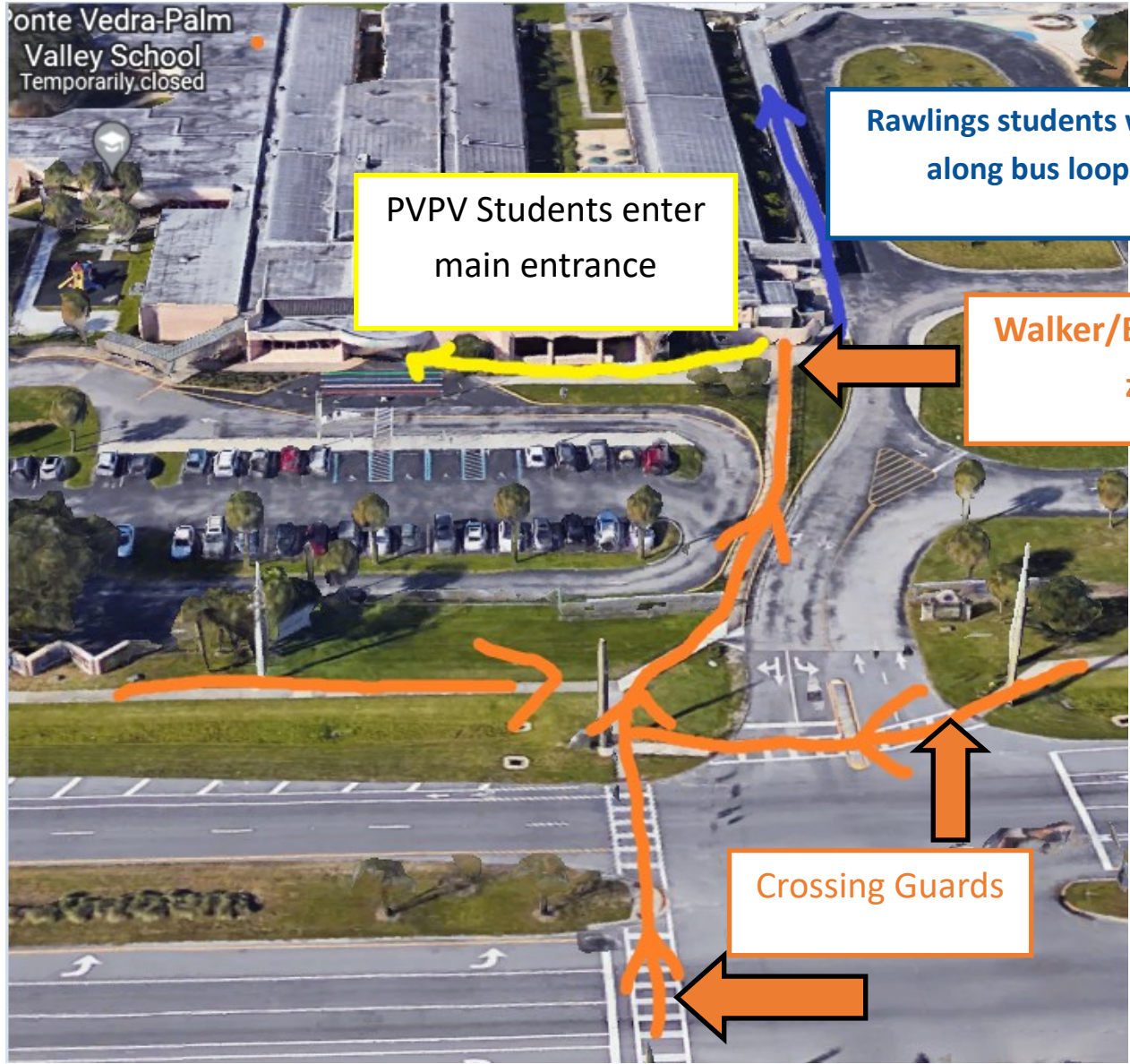
1. School Opens at 8:00 am
2. Safety Patrol or Staff will open Car Door
3. Students enter main entrance

PM Procedures

1. All PVPV Kindergarten, 1st Grade, and their older siblings will wait in PVPV Cafeteria at designated table.
2. Please have Car Rider Card on rear-view mirror for us to call names.
3. Pull all the way to the front.



PVPV Parent Pick-up line is for ALL Kindergarten and 1st-Grade students AND their older siblings. All 2nd, 3rd, and 4th Grade Siblings will go to PVPV Cafeteria for dismissal.



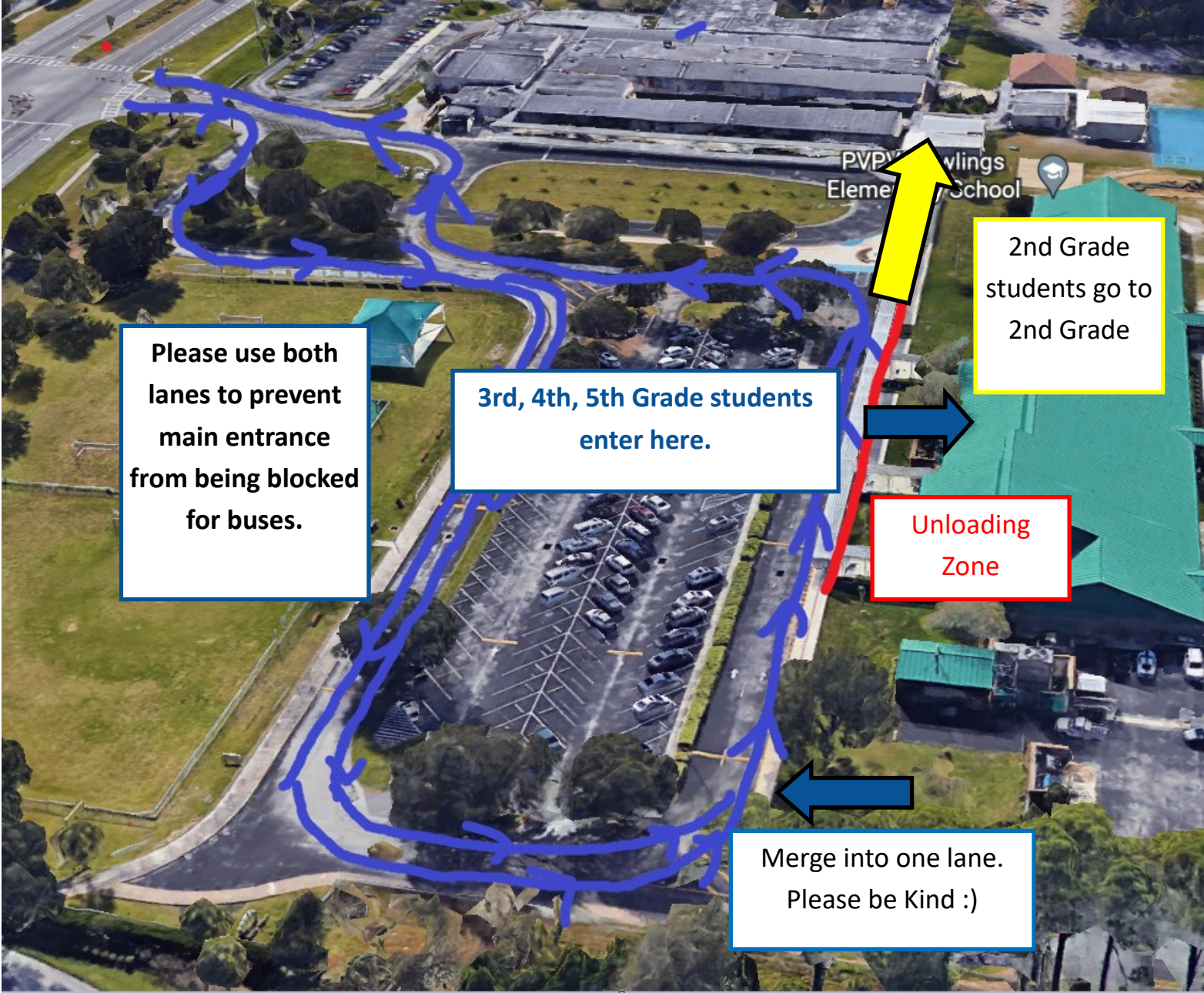
Ponte Vedra-Palm
Valley School
Temporarily closed

PVPV Students enter
main entrance

Rawlings students walk
along bus loop

Walker/Biker Drop off
zone.

Crossing Guards



Please use both lanes to prevent main entrance from being blocked for buses.

3rd, 4th, 5th Grade students enter here.

2nd Grade students go to 2nd Grade

Unloading Zone

Merge into one lane. Please be Kind :)